

# Mississippi Profile

FALL 2011

Information Publication from the Mississippi Department of Mental Health

## DMH Celebrates National Recovery Month



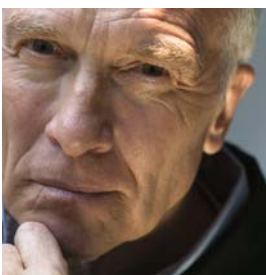
DMH celebrated National Recovery Month in September. A proclamation signed by Governor Haley Barbour was presented at the September Board of Mental Health meeting.

DMH is working towards a recovery-oriented system of care which focuses on a network of services and supports. This includes hospital and community-based care, peer-run services, involvement from family, and other supports that incorporate the values and principles associated with recovery. The goal is for individuals to restore, rebuild and reclaim control of their lives by increasing their resilience and focusing on their strengths.

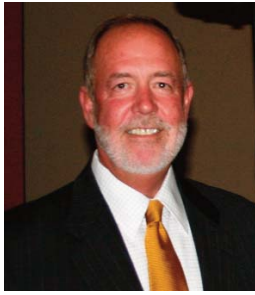
"Recovery is different for everyone," said Ed LeGrand, DMH Executive Director. "Recovery is an individual's unique and ongoing process or journey to have a meaningful and productive life. We all possess the fundamental and inherent value to be accepted and treated with respect and worth."

Pictured are (l to r) Diana Mikula, DMH Deputy Executive Director; Robert Landrum, Chairman of the Board of Mental Health; Ed LeGrand, DMH Executive Director; Rose Roberts, Vice-Chair of the Board of Mental Health; Herb Loving, Director of the Bureau of Alcohol and Drug Services; and Matt Armstrong, Director of the Bureau of IDD.

Supporting a Better  
Tomorrow... Today



# Executive Director's Message



As 2011 rapidly comes to an end, I believe it is important to look back at the accomplishments that have been made which have improved our public mental health system.

During 2011, we made great strides in moving towards a more recovery-based system of care. *Mississippi Profile* highlights National Recovery Month which focused on recovery for individuals with mental illness and substance abuse problems.

We must continue to educate our policymakers, friends, family members, health care providers, and businesses that substance abuse and mental health issues are treatable. Behavioral health is an essential part of overall health. Most of us don't think twice about seeking treatment for diabetes, asthma, high blood pressure or other health conditions. We need to remind our fellow citizens that people should seek treatment for substance abuse and mental health with the same urgency as they would any other health condition. Recovery not only benefits the individual, it benefits the entire community.

In 2011, we continued our goal to advocate for excellence in services through the voices of the individuals being served and to ensure services meet the expressed needs of individuals receiving services. DMH adopted the Council On Quality and Leadership's Personal Outcome Measures © as the foundation for the DMH Peer Review Process. Through the use of the Personal Outcomes Measures © DMH has the opportunity to determine whether or not individuals are achieving personal outcomes that are measures of a person's quality of life. This was an essential step towards a recovery-based system.

I want to thank you for your support as we move toward a brighter future for the public mental health system in Mississippi. I hope you and your family have a Happy Thanksgiving.

Sincerely yours,

Edwin C. LeGrand III  
Executive Director

# Mississippi Profile



---

Fall 2011

Mississippi Department of Mental Health  
Board Members  
Robert Landrum, Chairperson  
Rose Roberts, LCSW, Vice Chairperson  
J. Richard Barry  
Margaret Ogden Cassada, M.D.  
George Harrison  
Jim Herzog, Ph.D.  
John Perkins  
Sampat Shivangi, M.D.  
Manda Griffin

---

Edwin C. LeGrand III  
Executive Director

---

Wendy D. Bailey, Editor

---

The Mississippi Profile is devoted to providing the public with information about services provided or administered by the Mississippi Department of Mental Health. It also strives to increase public awareness and knowledge about mental illness, mental retardation/developmental disabilities, substance abuse, and Alzheimer's disease and other dementia to improve health and quality of life.

---

This publication is free of charge to persons interested in mental health, mental retardation/developmental disabilities, substance abuse, Alzheimer's disease and other dementia, the Mississippi Department of Mental Health, or the individuals it serves. It is the policy of the Mississippi Department of Mental Health to comply with federal and state laws assuring equal opportunities of employment and services.

---

The editor reserves the right to edit all materials printed in this publication. Send requests for items to be included in the newsletter and other inquiries to:

Division of Public Information  
ATTN: Wendy Bailey  
MS Department of Mental Health  
1101 Robert E. Lee Building  
239 North Lamar Street  
Jackson, MS 39201  
Phone: (601) 359-1288  
TDD: (601) 359-6230  
FAX: (601) 359-6295  
wendy.bailey@dmh.state.ms.us

# DMH Paints It Purple for Alzheimer's

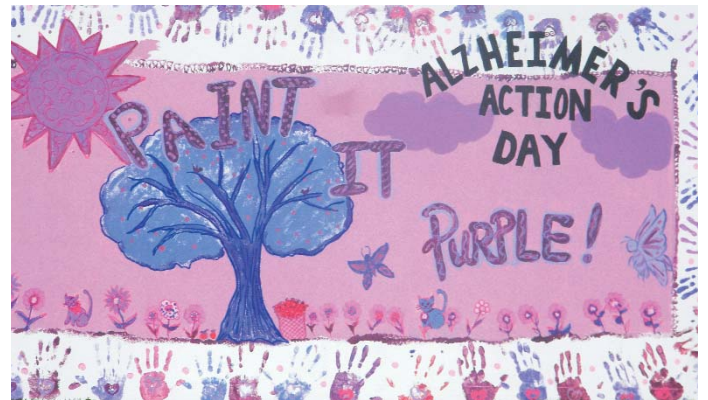
The Mississippi Department of Mental Health (DMH) and the Alzheimer's Association Mississippi Chapter helped paint the state purple on September 21 in honor of Alzheimer's Action Day.

DMH facilities and all Mississippians were encouraged to wear purple and display purple ribbons/bows on their homes and buildings to show their support for people with Alzheimer's disease and the loved ones who care for them.

"Paint It Purple! is about increasing awareness of this devastating disease," said Kathy Van Cleave, Director of DMH's Division of Alzheimer's Disease and Other Dementia. "By opening up the dialogue, we can bring Alzheimer's the attention it deserves. We are doing a lot to encourage awareness, education, and support, but there is so much more that needs to be done."

The emotional, physical and financial toll can be difficult for the estimated 53,000 Mississippians diagnosed with Alzheimer's disease. In 2007, there were 797 Alzheimer's disease related deaths in Mississippi. By 2025, it is estimated more than 65,000 Mississippians will have Alzheimer's disease.

"These figures are not simply statistics," said Patty Dunn, Executive Director of the Alzheimer's Association Mississippi Chapter. "It is a mother or a father, a brother or a sister or a friend. This global Alzheimer's disease epidemic demands an enormous amount of attention."

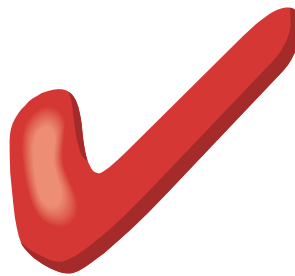


*Pictured above is a sign created by Boswell Regional Center in celebration of Paint It Purple.*



*Pictured are Mississippi State Hospital staff celebrating Paint It Purple on campus.*

*For information and upcoming events...*



*Check out our Web site at [www.dmh.ms.gov](http://www.dmh.ms.gov)*

# Armstrong Named Bureau Director of IDD



Matt Armstrong was named Director of the Bureau of Intellectual and Developmental Disabilities effective November 1. Armstrong previously served as the Director of the Bureau of Community Services.

As Director of the Bureau of Community Services, Armstrong was instrumental in the redesign of the Crisis Stabilization Units which now provide voluntary access to individuals in need of immediate crisis services.

Armstrong began working in the field of intellectual and developmental disabilities in the 1970s. He developed and worked in Early Intervention Programs and Family Support Services throughout Mississippi.

He has also provided behavioral management consultation to a variety of agencies in Mississippi including public and private schools, daycare/early

childhood programs, and in-home parent training.

“Throughout Mr. Armstrong’s career in both mental health and intellectual and developmental disabilities, his focus has always been on the person and their family,” said Ed LeGrand, DMH Executive Director. “His extensive knowledge of intellectual and developmental disabilities and his experience working with families and the community will greatly benefit the people we serve.”

The Bureau of Intellectual and Developmental Disabilities is responsible for the supervision of the Division of Home and Community Based MR/DD Waiver, the Division of Community Mental Retardation Services, the five comprehensive regional facilities for persons with intellectual and developmental disabilities, and a specialized juvenile rehabilitation facility.

Armstrong received his Bachelor’s degree in Special Education from the University of Southern Mississippi and his Master’s degree in Special Education from the University of Mississippi.

---

# Hutchins Named Bureau Director of Community Services



Jake Hutchins was named Director of the Bureau of Community Services effective November 1. Hutchins previously served as Director of the Division of Adult Community Services.

The Bureau of Community Mental Health Services has the primary responsibility for the development and administration of services to meet the needs of adults and children with mental illness or emotional disturbances and/or with alcohol/drug abuse/dependence problems, as well as persons with Alzheimer’s disease and other dementia.

“Mr. Hutchins has all of the qualities that will make an excellent Director of the Bureau of Community Services,” said Ed LeGrand, DMH Executive Director. “His

knowledge of community services is immense. He understands the value of community services and the need to move towards a recovery-based system of care.”

Hutchins began his experience in the private mental health sector with a primary focus on service delivery for children and adolescents suffering from abuse or neglect.

In 2001, Hutchins joined the State employment system. The primary focus of his tenure has been coordinating statewide mental health services for adults in community-based settings.

Hutchins holds a Master of Social Work degree, is a Certified Mental Health Therapist, Certified Mental Intellectual and Developmental Disabilities Therapist, Certified Public Manager, and is a DMH Licensed Administrator.

# Harris Named Director of Hudspeth Regional Center



Michael Harris was named Director of Hudspeth Regional Center (HRC) in July. Harris was appointed successor to Dr. John Lipscomb, who retired at the end of June.

After being appointed, Harris received a surprise when he arrived at the HRC campus to find staff members gathered at the gate and lined along the campus streets to give him a proper welcome as director.

"Mr. Harris has devoted much of his career to improving the lives of the individuals served at Hudspeth Regional Center," said Ed LeGrand, DMH Executive Director. "He is dedicated to the individuals and their families."

Harris grew up in Batesville and attended college at the University of Mississippi. After graduating with

a teaching degree in 1978, he began working at North Mississippi Regional Center (NMRC) as a special education teacher. While continuing to work at NMRC, he went back to Ole Miss and received a Bachelor's degree in special education, then completed his Master's in special education and administration.

After working a year as a special education teacher, Harris was appointed the Director of the Adult Education workshops. He continued to work at NMRC until 1987, when he and his wife, Debbie, moved to Brandon, where he became Director of Education at HRC. He became assistant director of HRC, 11 years later.

Harris is known for his service to the individuals at HRC, and will be an incredible asset as director of the facility.

---

# Ashley Named Director of South MS State Hospital



Clint Ashley was named Director of South Mississippi State Hospital (SMSH) in August.

Ashley, SMSH clinical support director, was appointed successor to Wynona Winfield, who retired at the end of June.

"I have great confidence in Mr. Ashley's ability to provide the leadership needed for SMSH to continue providing excellent service to the community," said Ed LeGrand, DMH Executive Director.

Ashley, who has been at SMSH since 2000, also has served as the hospital's director of risk management

and security and as director of the Crisis Intervention Center in Laurel.

He holds a Master of Science Degree in Workforce Training and Development from The University of Southern Mississippi. He completed the Mississippi State Certified Public Managers Program in 2002 and was awarded the National Askew Award for best model project.

His undergraduate degrees include a Bachelor of Arts Degree in Public Administration from The University of Mississippi, an Associate of Arts Degree from Copiah-Lincoln Community College, and an Associate of Science Degree in Information Systems Technology from Jones County Junior College.

## Hayles Named Director of North MS Regional Center



Edie Hayles was named Director of North Mississippi Regional Center (NMRC) in August. Since 2007, Hayles served as the Executive Director of the Mississippi Council on Developmental Disabilities.

“I am very excited that Ms. Hayles has accepted the position of the Director of NMRC,” said Kris Jones, Bureau of Intellectual and Developmental Disabilities. “She began her career at NMRC, has gained invaluable experience as the Director of the Council on Developmental Disabilities in MS, and will provide excellent leadership as she returns to NMRC.”

In 1989, Hayles began working at NMRC in the Resident Living Department. Over the years, she served in a variety of roles including Academic Teacher, Education Coordinator and Assistant Director for Community

Transition Services. She also authored several grants including the Community Employment for Individuals with Developmental Disabilities Grant and the Choices for Individuals with Disabilities Grant.

Hayles holds a Master of Education in Special Education from the University of Mississippi and is currently a Graduate student in Special Education at the University of Southern Mississippi.

She is a Board Member of the National Association for Councils on Developmental Disabilities and was a member of Mississippi’s first Autism Advisory Board. She is a member of the American Association on Intellectual and Developmental Disabilities, APSE and ARC of Mississippi. She is a Certified Public Manager and a Certified Intellectual and Developmental Disability Therapist.

---

## Jones Named Director of New Bureau



Kris Jones was named Director of the Bureau of Quality Management, Operations and Standards in September.

The Bureau is responsible for the development of DMH standards of care for providers, provider certification and compliance with DMH Standards,

development of the peer review system as a part of DMH’s overall quality management system, provision of support to programmatic divisions/bureaus with DMH to assist with information management and reporting, oversight of agency and provider emergency management/disaster response systems to ensure continuity of operations within the public mental health system, oversight of constituency services, and the future development of agency and provider performance measures.

Jones is a Licensed Master’s Level Social Worker, Certified Mental Health Therapist, Licensed Clinical Intellectual and Developmental Disabilities Therapist, and Certified Public Manager. She has worked in the mental health system in Mississippi at various levels with individuals with serious mental illness, serious emotional disturbance and intellectual and developmental disabilities.

Jones’ past work has focused on the delivery of community based mental health services and the development of the System of Care for children and youth with emotional and behavioral disorders, disaster mental health, youth suicide prevention, policy development, and strategic planning.

The Bureau of Quality Management, Operations and Standards is comprised of the following divisions/offices: Division of Certification, Office of Consumer Supports, Division of Disaster Preparedness and Response, and Suicide Prevention.

# MS Legislators Participate in NAPA Forum

Members of the Mississippi Legislature participated in a Legislative Forum and National Alzheimer's Plan Act (NAPA) Public Input Session at the Mississippi Department of Mental Health's (DMH) Division of Alzheimer's Disease and Other Dementia's 12th Annual Conference on Alzheimer's Disease and Psychiatric Disorders in the Elderly on August 17 in Olive Branch.

Senators and Representatives participated in the Forum to give the more than 500 conference attendees an opportunity to ask questions related to Alzheimer's disease and other mental health issues.



Pictured (l to r) are Representative John Mayo; Dianne Arnold, DMH Division of Alzheimer's Disease; Senator Terry Burton; Ed LeGrand, DMH Executive Director; Representative Johnny Stringer; Kathy Van Cleave, Director of the Division of Alzheimer's Disease; and Melora Jackson, DMH Division of Alzheimer's Disease.

## DMH Launches Best Practices Newsletter

*Innovations in Practice* is a new DMH online newsletter which focuses on clinical issues. The newsletter is published bi-annually by the DMH Goal 4 Strategic Planning Committee. It offers an opportunity to review evidenced-based and best-practice models in behavioral health care and to highlight effective treatments in Mississippi. Articles offering skills building and consultative information will be included.

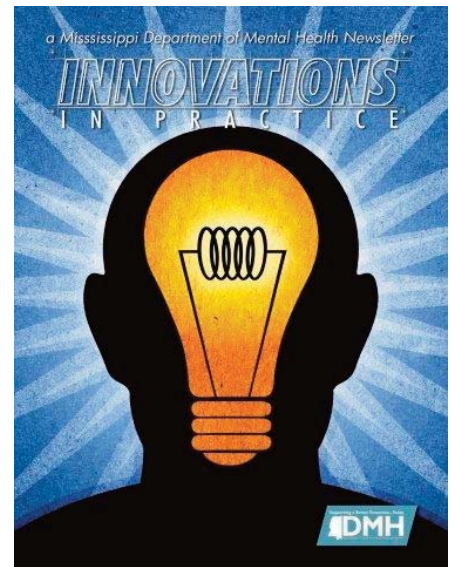
Manuscript submissions to *Innovations in Practice* should be emailed in a Microsoft Word format. Articles should be written in a style that is accessible and of interest to mental health professionals, regardless of specialization. Submissions of 500-700 words must have at least one reference, with at least two references for articles between 700-1,200 words in length.

All submissions must be sent to [mardi.allen@dmh.state.ms.us](mailto:mardi.allen@dmh.state.ms.us) for consideration by the Editorial Committee. Please include at least one

photograph with each article, including a head shot of the author.

For the Spring 2012 edition, manuscripts must be received by March 16, 2012. Please contact Dr. Mardi Allen, DMH Clinical Services Liaison, at 601-359-1288 or 601-954-

5921 for complete details of requirements.



## *Loving Retires After 35 Years with DMH*



Herbert Loving, Director of the Bureau of Alcohol and Drug Services has announced his retirement after 35 years of service at DMH.

During his years at DMH, Loving has served as Project Officer for a statewide drug program, Unit Director of Treatment and Rehabilitation, Division Director of Employee Assistance Services, and for the last 15 years, the Director of the Bureau of Alcohol and Drug Services.

As Bureau Director, Loving faced many challenges toward funding programs. The Bureau funds most of the alcohol and drug services available in Mississippi. The remaining services are provided through private hospitals and other federally funded resources.

“Mr. Loving has done a superb job meeting the needs of the thousands of Mississippians with alcohol and drug abuse problems,” said Ed LeGrand, DMH Executive Director. “His knowledge of services and supports and his caring heart have helped many people recover from their addictions.”

Loving has a Bachelor’s degree in Economics and a Master’s degree in Guidance and Counseling from Jackson State University. He is a Certified Public Manager, Licensed MH/MR Administrator, and a Certified Mental Health and Mental Retardation Therapist. He is the past Chairperson for the Southeast School for Alcohol and Drug Studies.

Loving will retire on January 31, 2012.

---

## *Avery Moving Into Bureau Director Role*



Jerri Avery will be moving into the role of Director of the Bureau of Alcohol and Drug Abuse Services in February 2012. Avery has worked in the Bureau for the past 14 years and currently serves as the Director of the Division of Substance Abuse Prevention.

Avery is a Certified Addictions Counselor, Certified MH Therapist, Certified IDD Therapist, and Licensed MH Administrator. She is a Certified Public Manager and a graduate of the Stennis Institute of Government. She is currently pursuing her Ph.D. at Jackson State University in Public Policy and Administration. For four years, she served as the Director of the Mississippi School for Addiction Professionals.

“Ms. Avery is a natural leader and will bring a wealth of knowledge and experience to the role of Bureau Director of Alcohol and Drug Abuse Services,” said Ed LeGrand, DMH Executive Director. “She has developed strong prevention programs over the last several years which have benefitted thousands of Mississippians.”

The Bureau of Alcohol and Drug Abuse Services is responsible for establishing, maintaining, monitoring, and evaluating a statewide system of alcohol and drug abuse services, including prevention, treatment, and rehabilitation. The overall goal of this system is to provide a continuum of community-based, accessible services. The Bureau provides technical assistance on the implementation of Employee Assistance Programs to state agencies and other interested organizations. All community services are provided through a grant/contract with other state agencies, local public agencies, and nonprofit organizations.



# Department of Justice Visits Mississippi

In February 2011, the Mississippi Department of Mental Health (DMH) was notified that the United States Department of Justice (DOJ) would be conducting an investigation of facilities operated by DMH for individuals with mental illness and intellectual disabilities.

The investigation will focus on whether individuals are served in the most integrated setting appropriate. DOJ indicated that their main focus would be on investigating matters related to the Americans with Disabilities Act (ADA), the Medical Assistance Act, the U.S. Supreme Court's Olmstead decision, and the Court's mandate that persons be served in community settings if determined appropriate and for which there is no objection.

"We want every person served and/or their families to be able to make choices about their options for receiving services and supports. Any person and his/her family currently served by the public mental health system should have choices," said Ed LeGrand, DMH Executive Director.

"Our only concern about DOJ's involvement is that we will be required to reconfigure services and supports for people who are currently involved in our programs at the expense of expanding capacity to serve people who are currently underserved or who are on waiting lists and not receiving any services at all," said LeGrand.

We encourage all families, staff members and communities to become knowledgeable about the choices available. This process should be about all people interested in the public mental health system making informed decisions about what Mississippi's service system and supports will look like in the future.

Decisions regarding the most appropriate setting for an individual are made by our treatment professionals and individuals/legal representatives/family members. Our staff seeks to serve individuals in the environment most appropriate for their individual needs – which may be in a facility or residential/community-based setting. The goal for every individual is recovery - their

unique and ongoing process or journey to have a meaningful and productive life.

DOJ has been involved with more than 25 states' mental health programs. In the past 12 months, a total of three states have reached settlements with DOJ. During recent years, some of the settlements have included the forced closure or state institutions for persons with intellectual and developmental disabilities and long-term care facilities for individuals with a mental illness.

On May 31 – June 2, DOJ visited Mississippi State Hospital, Hudspeth Regional Center and Region 8 Community Mental Health Center (CMHC). DOJ representatives were very complimentary of the dedication and the level of care staff provide to the individuals they serve.

On August 8 – 11, DOJ returned to visit East Mississippi State Hospital, Ellisville State School, Specialized Treatment Facility, Boswell Regional Center, South Mississippi State Hospital, Hudspeth Regional Center, Mississippi Adolescent Center, Region 8 CMHC, Region 12 CMHC, Brookhaven Crisis Stabilization Unit, Laurel Crisis Stabilization Unit, and Millcreek.

DOJ will use the information obtained through records requests from DMH and visits to facilities and programs to issue a letter that reflects their findings. This is referred to as a "findings letter." No conclusions have been reached to date.



***Need Help... Visit DMH's Web site  
at [www.dmh.ms.gov](http://www.dmh.ms.gov) and  
click on Talk About It.***

# Day of Diversity Promotes Dialogue

DMH celebrated Day of Diversity with two special programs on October 12 and 13 to help bring people of different backgrounds together for dialogue to increase understanding and cooperative action in local communities.

The two programs featured Former Governor William Winter, Dr. Dolphus Weary, President of the Rural Education and Leadership Christian Foundation, along with a presentation from Mississippi Rehabilitation Service's Benjamin Wagenknecht, Director of the Office of Deaf and Hard of Hearing.

The Day of Diversity is a coordinated effort by the Mental Health's Multi-Cultural Task Force, regional community mental health centers, faith-based organizations, local government entities and other community organizations to invite people throughout the state of Mississippi to join together to learn about, understand and celebrate diversities across our state.



Pictured above (l to r) Former Governor William Winter; Tysonya Coleman, NAMI Support Coordinator; Albertstein Johnson-Pickett, DMH Cultural and Linguistic Coordinator; Diana Mikula, DMH Deputy Executive Director; and Kenneth Leggett, DMH Director of the Division of Audit and Grants Management.

---

## FASD Conference Draws More than 400 Participants

DMH hosted the 8th Annual Fetal Alcohol Spectrum Disorders Symposium (FASD): FASD...It's Preventable Y'all! on September 9 at the Jackson Convention Center. More than 400 participants attended the conference which focused on providing an increased understanding of FASD in Mississippi.

"Mississippi is thrilled with the growing awareness of FASD issues in our state as evidenced by the exceptional attendance at the 2011 FASD Symposium," said Trisha Hinson, FASD State Coordinator for Mississippi. "More and more of our service providers and families are recognizing the need to identify and service children in Mississippi who have diagnosable damage caused by prenatal exposure to alcohol."

The Symposium featured Morgan Fawcett, a Native American who was diagnosed with FASD when he was 15 and who is now a charter member of the Self Advocates with FASD in Action (SAFA). The group was created to give a personal voice to the need to better understand FASD in order to prevent it.

Kathy Mitchell of the National Organization of Fetal Alcohol Syndrome presented on how FASD education, prevention and advocacy is progressing on the national stage. From



Alaska, Diane Casto, who is the state FASD Coordinator and National Prevention Network Representative, informed participants about the work they're doing in a state that takes being rural all the way to the wilderness.

Pictured above are (l to r) Kathy Mitchell, presenter; Trisha Hinson; and Diane Casto, presenter. Not pictured is presenter Morgan Fawcett.

## DMH Welcomes Visitors from Brazil

The Mississippi Department of Mental Health's Bureau of Alcohol and Drug Abuse is working with the International Visitor Leadership Program on a project for Brazil entitled, "Drug Demand Reduction & Substance Abuse Prevention in the United States."

Four Brazilian visitors were invited to the United States to learn about the overall strategy to address the problem of illicit drug use in the U.S., including prevention efforts to combat drug use in schools, workplaces and communities. In August, the group met with staff from the Bureau of Alcohol and Drug Abuse to learn about prevention activities in Mississippi.



Pictured are (l to r) Herb Loving, DMH Director of the Bureau of Alcohol and Drug Abuse; Francisco Italice Buonafina; Mary Aparecida Rangel; Luiz Alberto Chaves Oliveira; Jose Florentino Dos Santos Filho; and Jerri Avery, DMH Director of Prevention.

---

## Simmons Honored at Maggie Awards



South Mississippi State Hospital's (SMSH) director of public relations, Donna Simmons, was recently honored for outstanding work by the Mississippi Hospital Association's (MHA) Society for Health Care Marketing and Public Relations.

At the 24th Annual Maggie Awards on November 3, SMSH received a Maggie Award in the Special Events category for the hospital's Butterfly Effects event, honoring the hospital's 10th Anniversary Celebration in 2010. The Butterfly Effects event also won Best of Show Overall.

The Maggie Awards program recognizes outstanding marketing and communication work submitted by professionals from the health care sector in Mississippi. This year, there were over 200 entries sub-

mitted from hospitals, health systems, and other health care organizations from across the state.

Simmons also received the Junior Professional of the Year Award during the society's annual meeting. This award is given each year to an outstanding professional in the field of health care marketing and public relations. It is based on accomplishments and experience, focusing on professionalism, creativity, contributions to the organization and communities served, as well as a continued dedication to learning and furthering the field of marketing and public relations.

Simmons has been employed with SMSH since February 2008. She holds a Bachelor of Arts degree in Mass Communication and Journalism with an emphasis in public relations from the University of Southern Mississippi.